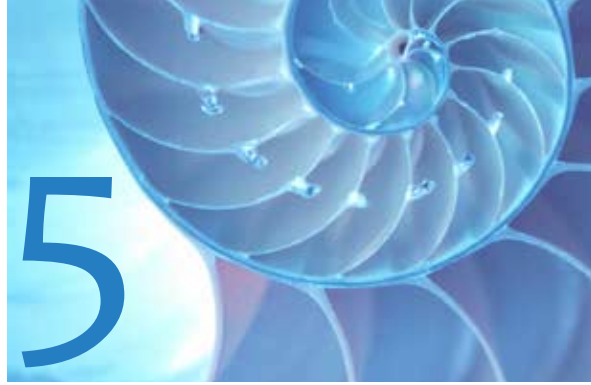


ENAR 2015



Career Placement Services

Sunday, March 15 | 4:00pm – 6:30pm

Monday, March 16 | 9:30am – 4:30 pm

Tuesday, March 17 | 9:30am – 3:30pm

General Information

The ENAR 2015 Career Placement Service helps match applicants seeking employment and employers. The service includes online registration and electronic uploading and distribution of applicant and employer materials through a password-protected online web-based facility. Visit the ENAR website at:

http://www.enar.org/meetings2014/career_center to register for the placement center.

Job announcements and applicant information can be readily accessed electronically, applicant information will be opened prior to the meeting, and materials will remain available online after the meeting. ENAR provides separate large reading/planning rooms for employers and applicants to review materials, dedicated placement center personnel onsite, and optional private interview rooms available for employers. Employer and applicant reading/planning rooms are equipped with a small number of computers with internet connections, and printers. However, to make the most efficient use of the Placement Center, we recommend that participants register listings in advance of the meeting to maximize visibility, explore the database before the meeting, and, if attending, have a laptop computer on-site.

Employers

Each year numerous qualified applicants, many approaching graduation, look to the ENAR Placement Center to begin or further their careers. Organizations including government agencies, academic institutions, and private pharmaceutical firms all utilize the ENAR

Career Placement Service. ENAR recognizes the value the Career Placement Service provides to members and, to make it more efficient and effective for both employers and applicants, uses an electronic registration process and an online database of applicant resumes. All registered employers will receive full access to the placement center for up to 3 company representatives, up to 4 job postings, pre-meeting access to the online applicant database of resumes, full conference registration for up to 3 representatives, and access to the employer placement center room. ENAR is also offering those organizations seeking private interview rooms the option to reserve a private room for interviews in 4-hour increments.

Employer Registration

The registration fee for employers includes full access for up to four position postings and up to 3 representatives, pre-meeting access to the online applicant database of resumes, up to 3 full conference registrations, and access to the employer placement center room.

Employer Resource Area

ENAR will provide internet access, laptops, and printers available in the employer resource room for viewing the applicant resume database. However, for most efficient use we recommend employers have on-site access to a personal laptop computer.



Interview Suites

For an additional fee, employers may reserve private interview suites each day on a first-come, first-served basis.

Applicants

If you have an interest in a career in biometrics, you can utilize the ENAR Career Placement Center to get started or get ahead. Many employers attend the ENAR Spring Meeting each year seeking qualified applicants. All registered applicants may register for up to three job classification types, and receive full access to the placement center applicant room and the online employer job posting database. Please note that to fully utilize the online database, we recommend applicants register in advance to maximize visibility, explore the database shortly before the meeting and, if attending, have a laptop computer on-site. If you are planning to interview and participate on-site you must also register for the conference and pay the meeting registration fee.

Applicant Registration

The ENAR Career Placement Center provides opportunities for qualified applicants to meet employers and learn about organizations employing biostatisticians.

Visibility to Employers

The Online Applicant database is made available to all employers prior to the opening of the placement center.

Applicant Resource Area

ENAR will have internet access, three laptops, and printers in the applicant room for viewing the employer job posting database. However, for **most efficient use** we recommend applicants have on-site access to a personal laptop computer.

Employer | Registration Instructions, Deadlines, and Fees

ALL employers must FULLY complete an online Employer Form located at: http://www.enar.org/meetings2014/career_center/ for each position listing. Attachments may be included.

	DEADLINES	
	BY Feb. 8	AFTER Feb. 8
Employer <i>3 reps/4 job postings</i>	\$ 1550	\$ 1675
Private Interview Room <i>Per 4-hour increments</i>	\$ 250	n/a
Additional Representatives <i>Cost per person includes conference registration</i>	\$ 500	\$ 550
Additional Job Postings	\$ 100	\$ 150

Applicant | Registration Instructions, Deadlines, and Fees

ALL applicants must FULLY complete an online Applicant Form located at: <http://www.enar.org/CareerCenter/> for each job classification.

	DEADLINES	
	BY Feb. 8	AFTER Feb. 8
Regular Registration	\$ 50	\$ 60
Student Registration	\$ 25	\$ 35



Applicants

PLEASE NOTE: If you are planning to interview and participate on-site you **must** also register for the conference and pay the meeting registration fee.